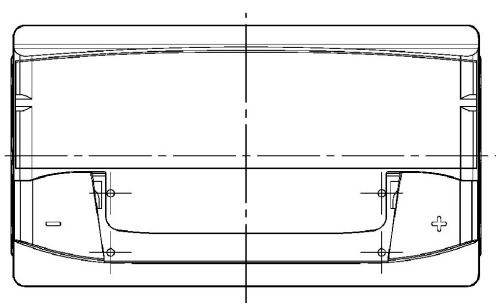
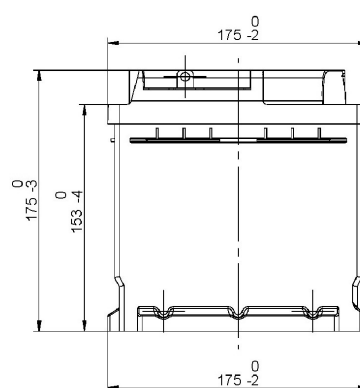
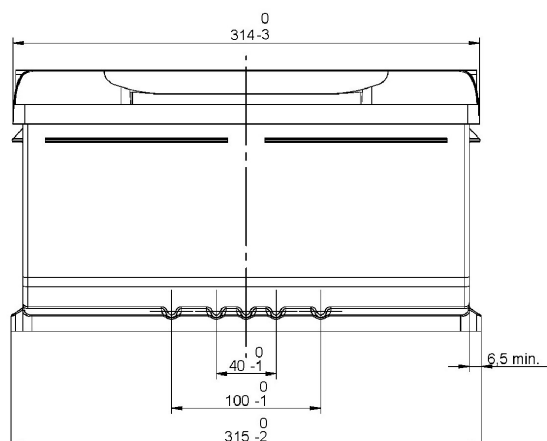


Central Article Code: LB4080C09-A

Created: 28/05/2015

Local Code: TA852

Modified: 20/12/2018



Final Outlook	LB409-A
Approval date	01/06/2015

PERFORMANCES

Voltage (V):	12 V	
C20 (Ah):	85.0	20 h
Cranking (A):	800	EN
Charge:	WET	
Technology:	Vented/Flooded	
Grid:	Ca/Ca	

STD. DIMENSIONS

Length (mm ± 2):	315
Width (mm ± 2):	175
Height (mm ± 2):	175
Total Weight (kg ± 5%):	18.50

All figures show nominal values. Tolerances are according to EN50342 and applicable European Regulations.

CONTAINER

Type:	LB4	GREY DARK
Hold Down:	B13	
H.D. Adapter:	No	

COVER

Type:	Double with Rigi	GREY DARK
Polarity:	ETN 0	
Terminals:	EN taper post	
Terminal Adapter:	No	
SOCI:	No	
Ventilation:	Central	
Filter:	2 Filters	
Lateral Plug:	Standard shape	Right side BLACK

PLUGS

Type:	1 x Vent Seale	GREY DARK
-------	----------------	-----------

HANDLES

Type:	1 x PSL AM	GREY DARK
-------	------------	-----------

OTHERS

Degassing Tube:	No
-----------------	----