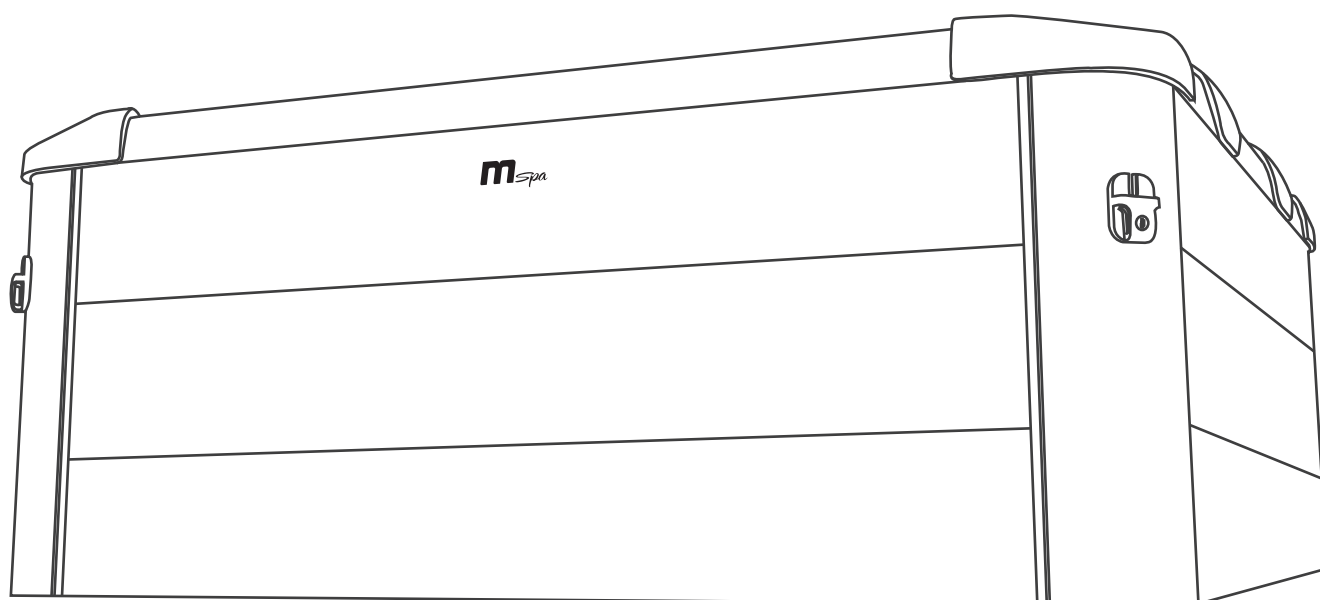


AERO

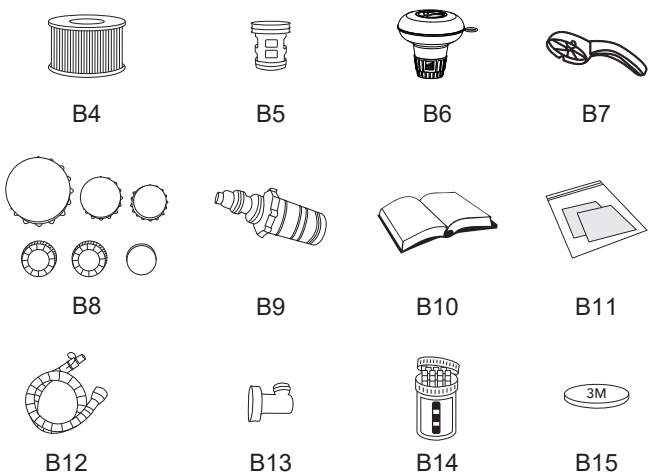
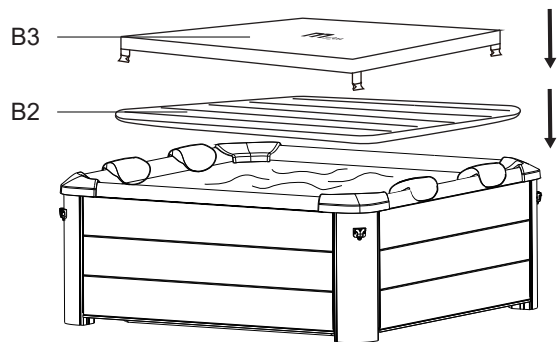
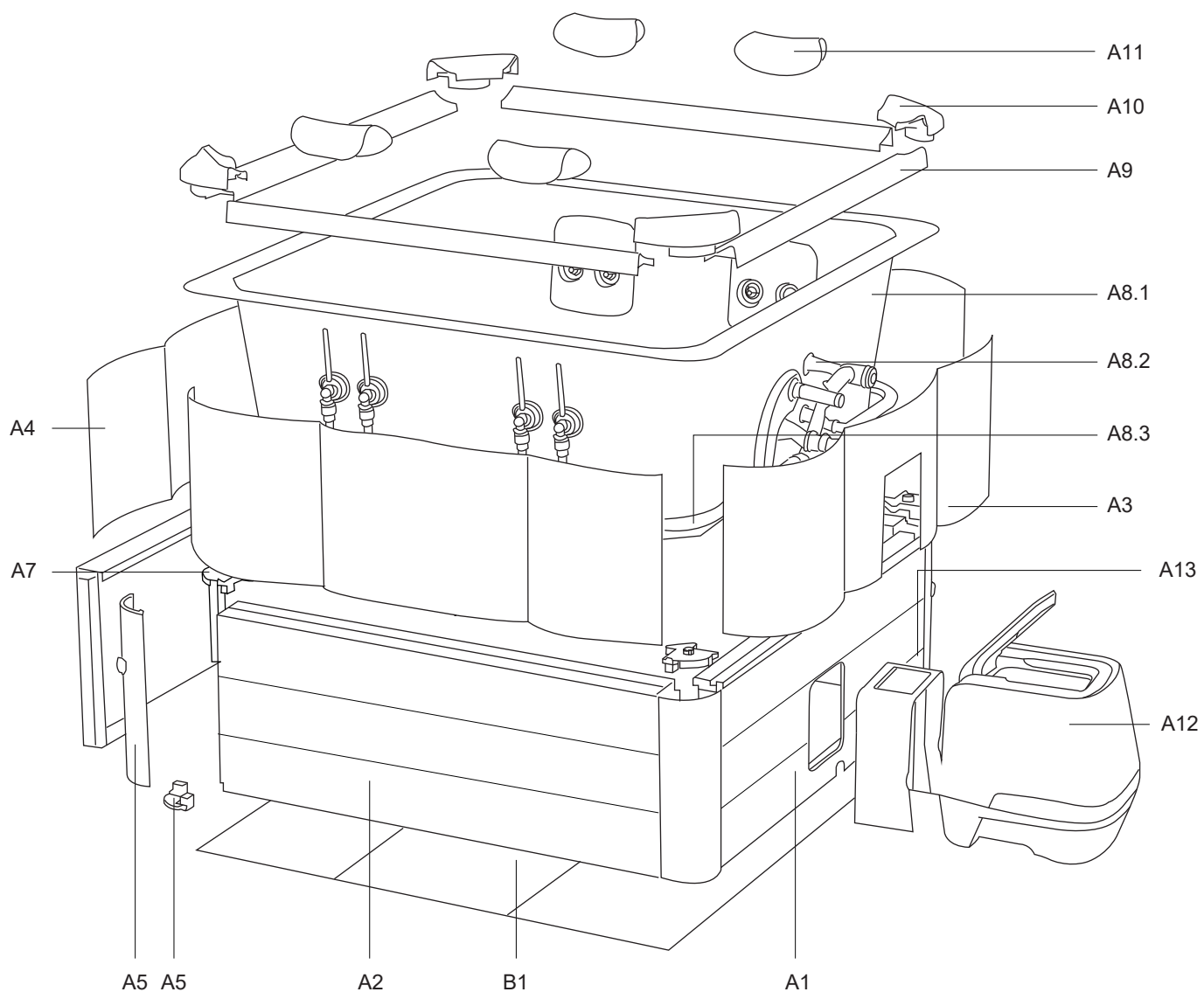
GUIDA RAPIDA ALL'INSTALLAZIONE



OSLO AERO PLUS / AMBER AERO PLUS
F-OS063WAP / F-AM063WAP
IT

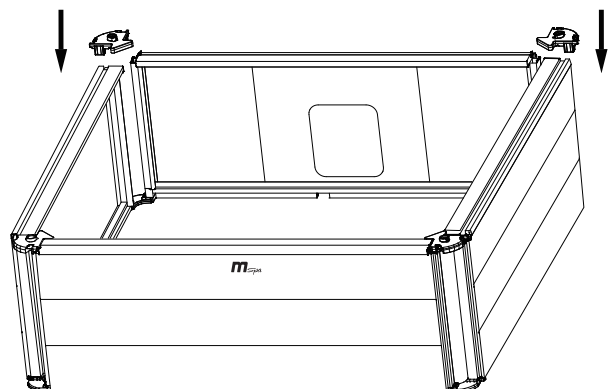
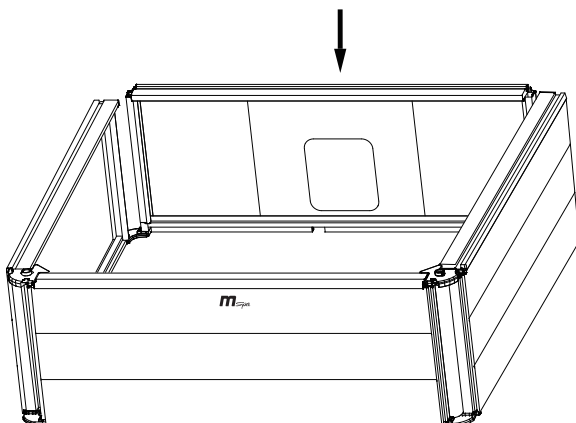
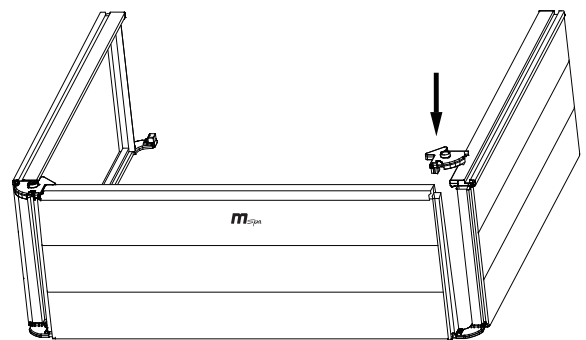
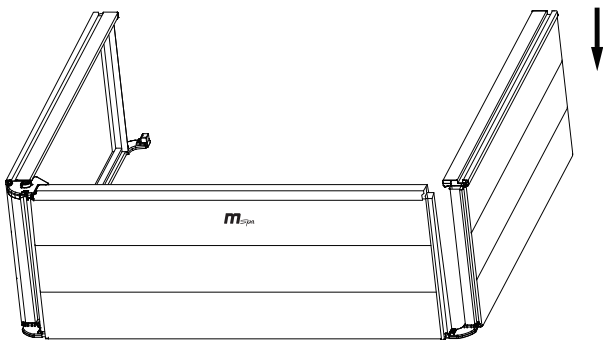
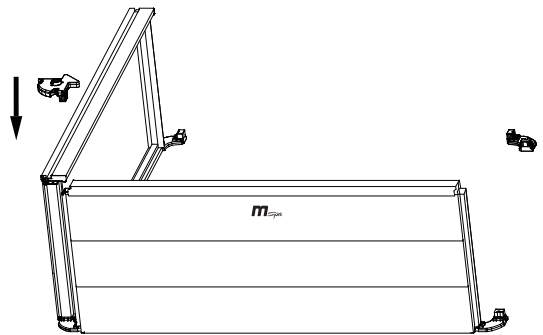
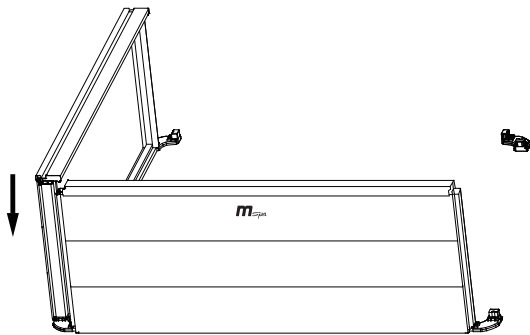
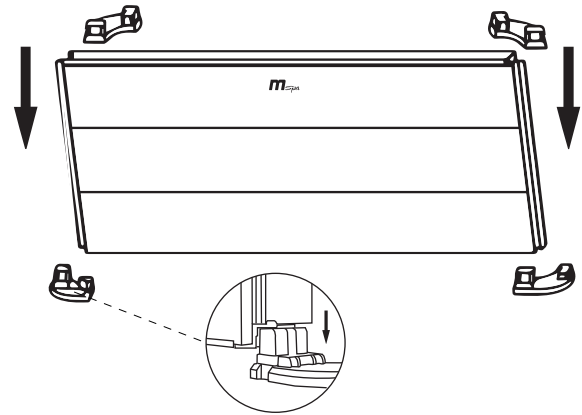
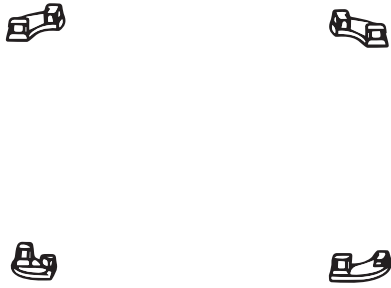
SPECIFICHE TECNICHE

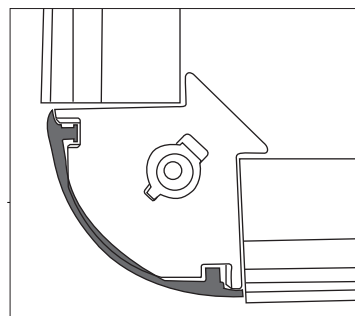
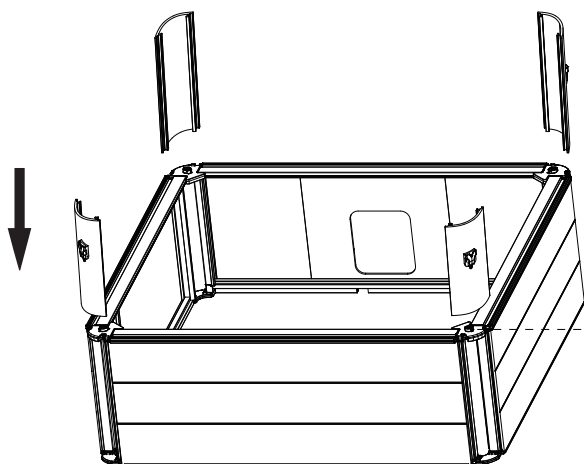
Modello n.	F-OS063WAP / F-AM063WAP
Informazioni di base	
Capacità posti a sedere	6
Capacità d'acqua	1150 L
Dimensioni esterne	1.8 m x 1.8 m
Dimensioni interne	1.6 m x 1.6 m
Altezza	0.65 m
Peso netto	99.5 kg
Coperchio Superiore	Rhino-Tech™ PVC rinforzato
Rivestimento Interno	AcrySkin™ PVC rinforzato
Materiale della Struttura Esterna	Pannello effetto legno in PS
Impianto Elettrico	
Sistema di Controllo	AC 220-240 V, 50 Hz
Potenza Nominale	2300 W
Riscaldatore	2200 W
Velocità di riscaldamento	1.4-1.8 °C/h
Soffiatore d'Aria per Massaggio	3 Livelli: 300W – 500W – 720W
Pompa a Getto	Hydromassage Jet Plus: 1100 W
Pompa Filtro	1800 L / h
Flusso Radiante UVC	40000 µW
Configurazione della Striscia LED	
Modello	LED - 6DC12R - OS60
Alimentazione	DC12 V, 22 W
Lunghezza	6 m
Chip LED	180 pcs



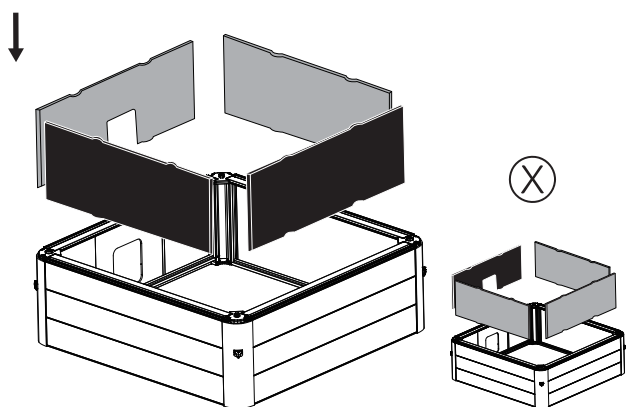
Numero di riferimento	Descrizione	Qty	Numero del cartone
	IT	Qté	
A1	Pannello a estremità aperta	1	3/4
A2	Pannello laterale rigido	1	3/4
		2	4/4
A3	Strato termico - estremità aperta	1	3/4
A4	Strato termico (1,85 x 0,5 m)	2	3/4
		1	4/4
A5	Trave d'angolo	4	3/4
A6	Base di posizionamento ancorata	4	3/4
A7	Giunto del pannello laterale	4	3/4
A8.1	Rivestimento interno spa	1	1/4
A8.2	Tubazioni della spa	1	1/4
A8.3	Striscia luminosa LED	1	1/4
A9	Rifinitura superiore	4	4/4
A10	Giunto rifinitura superiore con cuscino d'angolo	4	4/4
A11	Poggiatesta	4	3/4
A12	Centralina di controllo JET	1	2/4
A13	Copertura tubi rifiniti – 3 pezzi	1	2/4
B1	Tappetino termico da terra (1,7 x 0,7 m)	1	1/4
	Tappetino termico da terra (1,7 x 0,5 m)	2	4/4
B2	Camera d'aria gonfiabile	1	1/4
B3	Copertura spa con fibbia	1	1/4
B4	Cartuccia filtro	2	1/4
B5	Base della cartuccia filtro	1	1/4
B6	Dispenser chimico per pastiglie da 1"	1	1/4
B7	Chiave	1	1/4
B8	Tappi per canali dell'acqua/aria	1	1/4
B9	Adattatore per tubo da giardino	1	1/4
B10	Manuale utente	1	1/4
B11	Kit di riparazione	1	1/4
B12	Tubo di gonfiaggio	1	1/4
B13	Adattatore di gonfiaggio	1	1/4
B14	Striscia di test	1	1/4
B15	Nastro biadesivo	32	1/4

INSTALLAZIONE

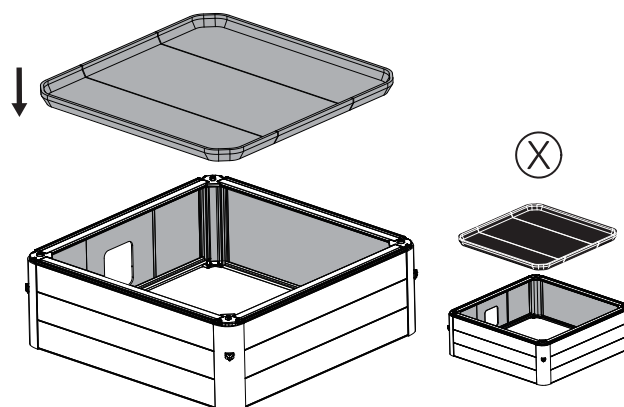




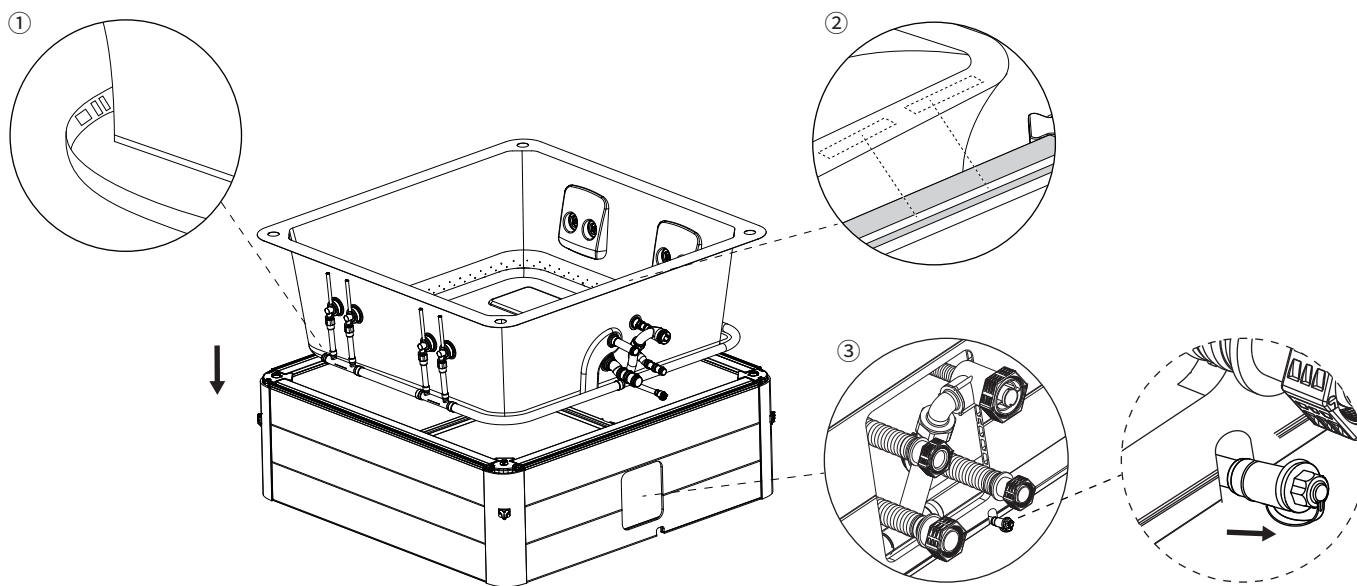
3M Utilizzare il nastro biadesivo se necessario.

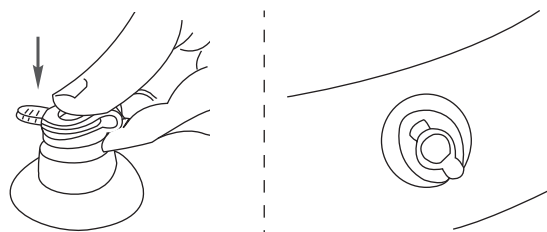
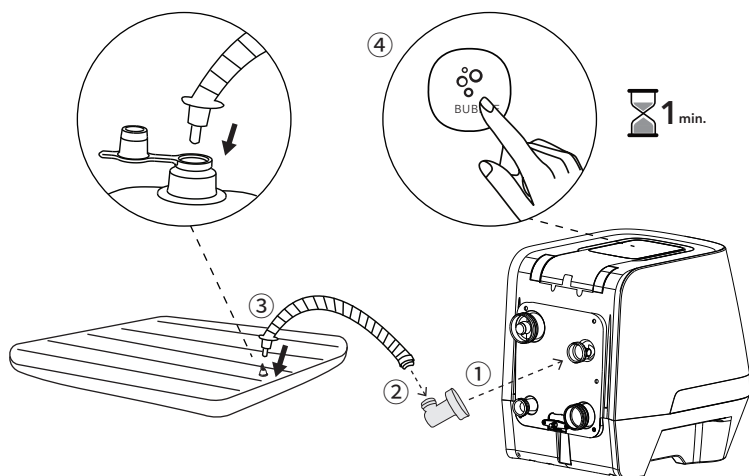
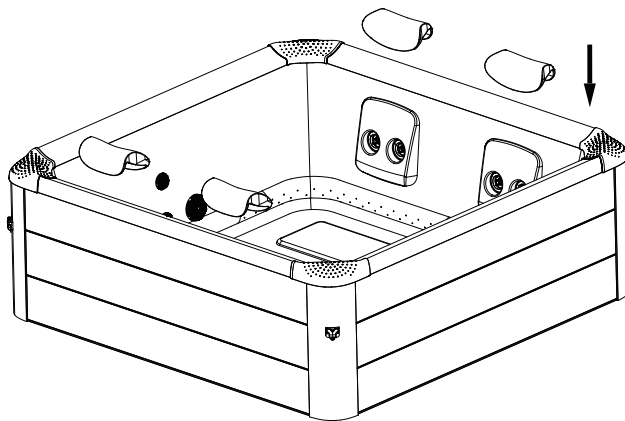
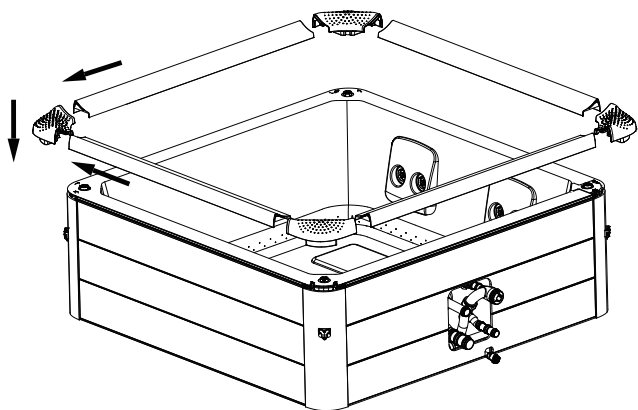


A3*1 + A4*3

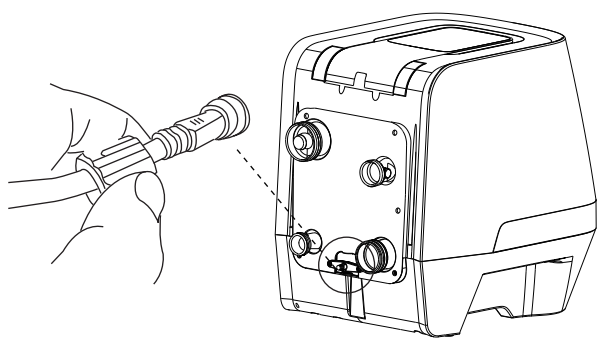


B1*3

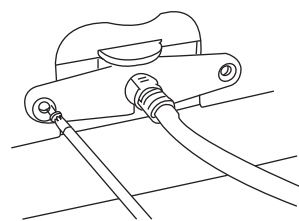
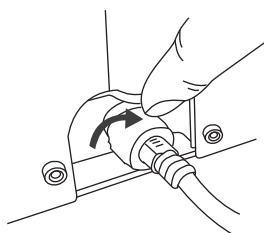
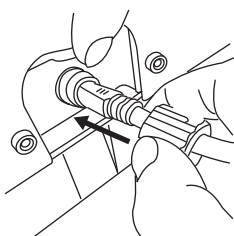
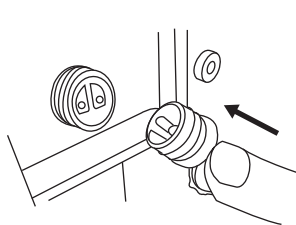
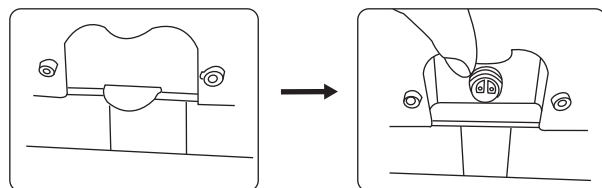
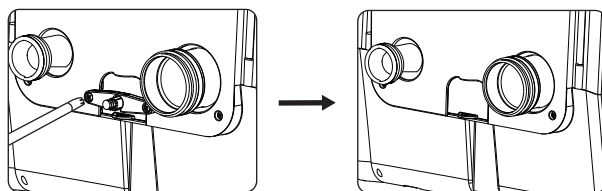


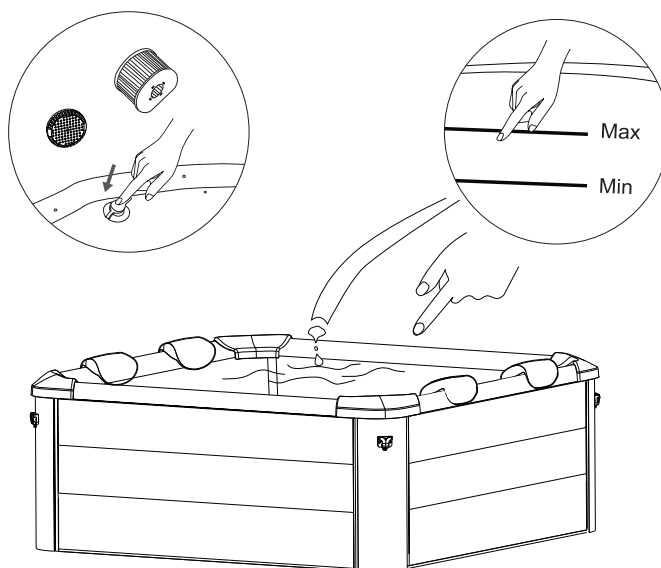
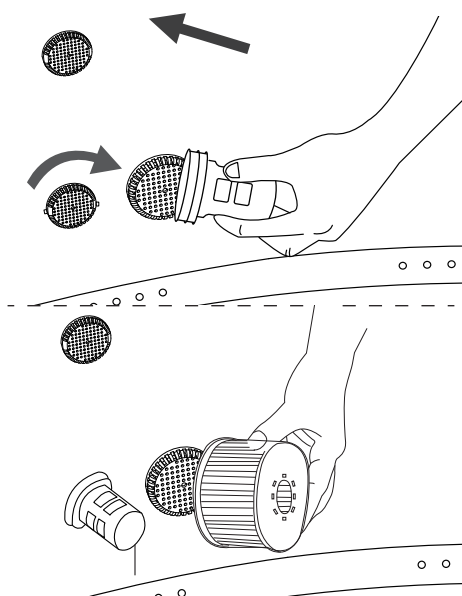
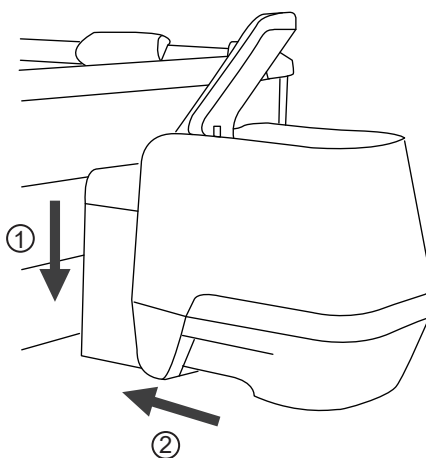
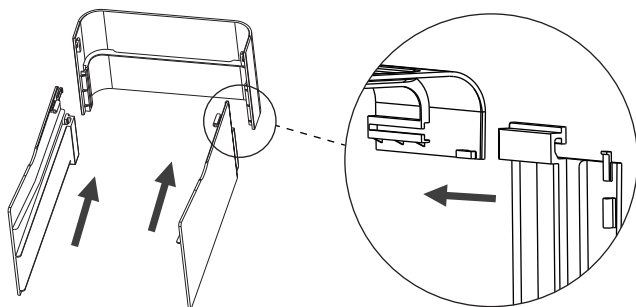
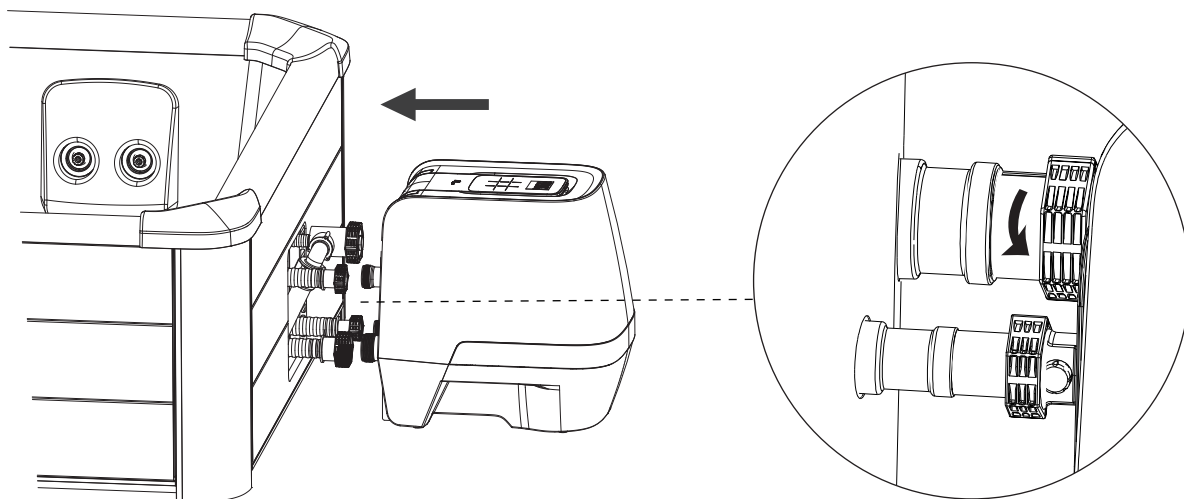


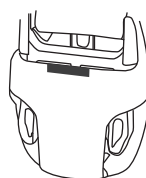
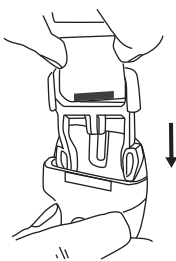
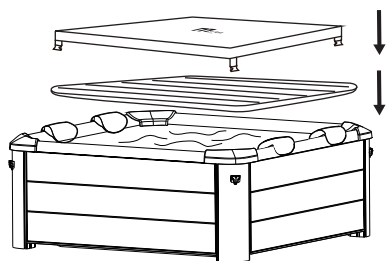
Tenere premuto il pulsante BUBBLE per più di 3 secondi per interrompere il gonfiaggio.



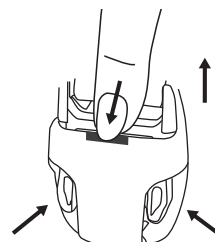
Collegare il cavo della striscia luminosa LED alla centralina di controllo.







Blocco



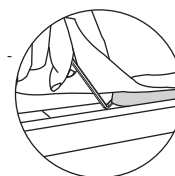
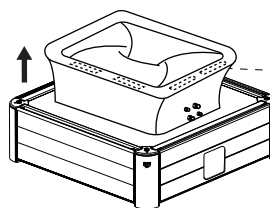
Sblocco

SMONTAGGIO

Istruzioni per lo Smontaggio

Rimuovere tutte le parti seguendo l'ordine inverso rispetto ai passaggi di installazione.

NOTA: Per rimuovere il rivestimento interno (liner), utilizzare una chiave a L per sollevare il blocco di fissaggio dallo slot del pannello laterale. Non trascinare direttamente il liner.



Sgonfiaggio della Camera d'Aria della Spa

1. Aprire il tappo della valvola per sgonfiare la camera d'aria. Per uno sgonfiaggio rapido, inserire la cannucchia (inclusa nel kit di riparazione) nella valvola.
2. Una volta completato lo sgonfiaggio, rimettere il tappo.

