

ASSEMBLY INSTRUCTIONS

ART NO.C1974101 - TOOL TROLLEY



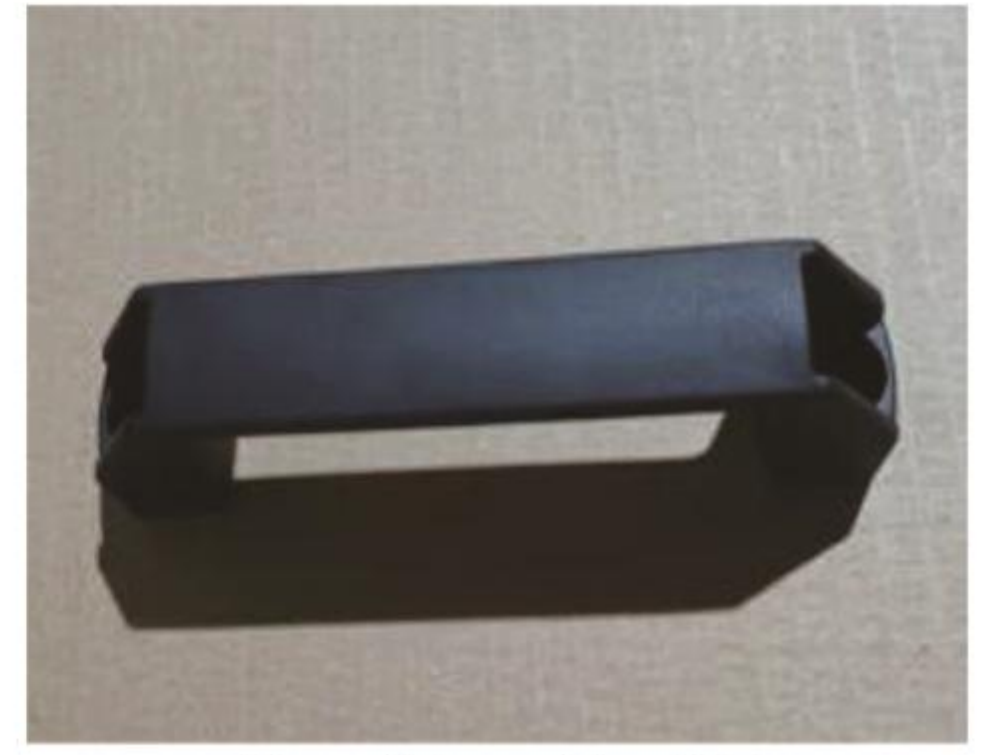
A – Trolley X1



B – Back Panel X1



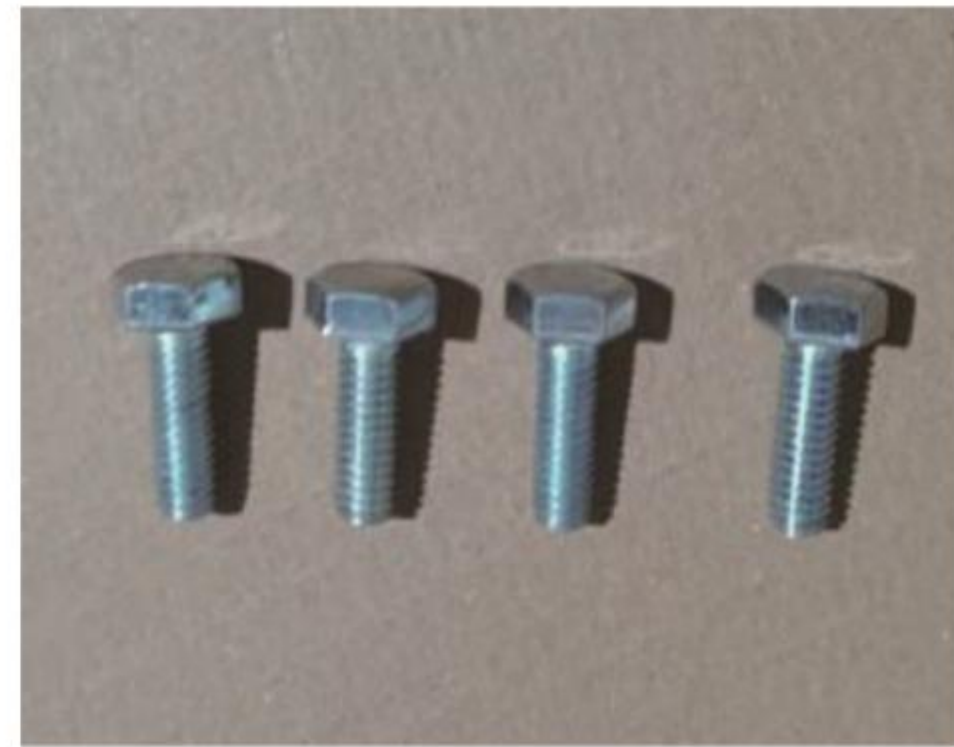
C – Support Panel X2



D – Handle X1



E – Wheel X4



F– Screw X16



G – Screw X9



H – Screw X2

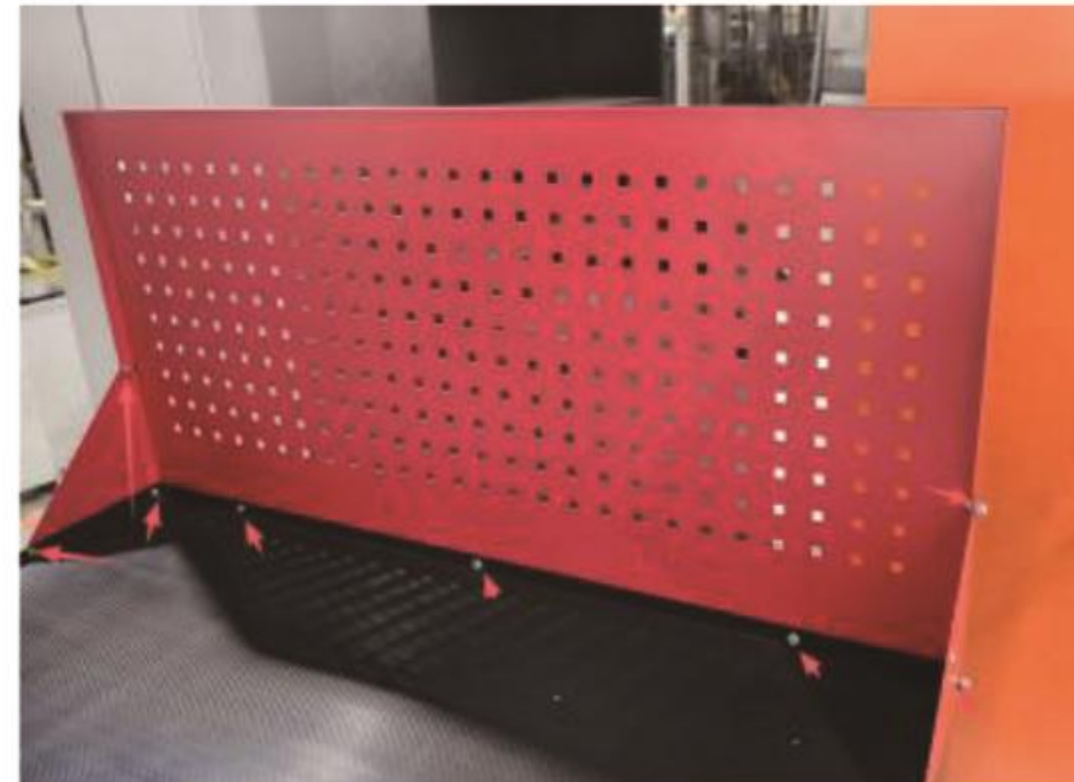


I – Hex socket screw wrench X1

ASSEMBLING



Step 1: Screw the wheel E together with trolley A, Each wheel use 4 screws F (M8–20)



Step 2: Assemble back panel B together with trolley, Use 2 support panel C and 9 screws G (M8–10)



Step 3: Assemble handle D together with trolley, Use 2 screws H (M8–15)



Finsh



MANUALE D'ISTRUZIONI

ART NO.C1974101 - CARRELLO OFFICINA PORTAUTENSILI



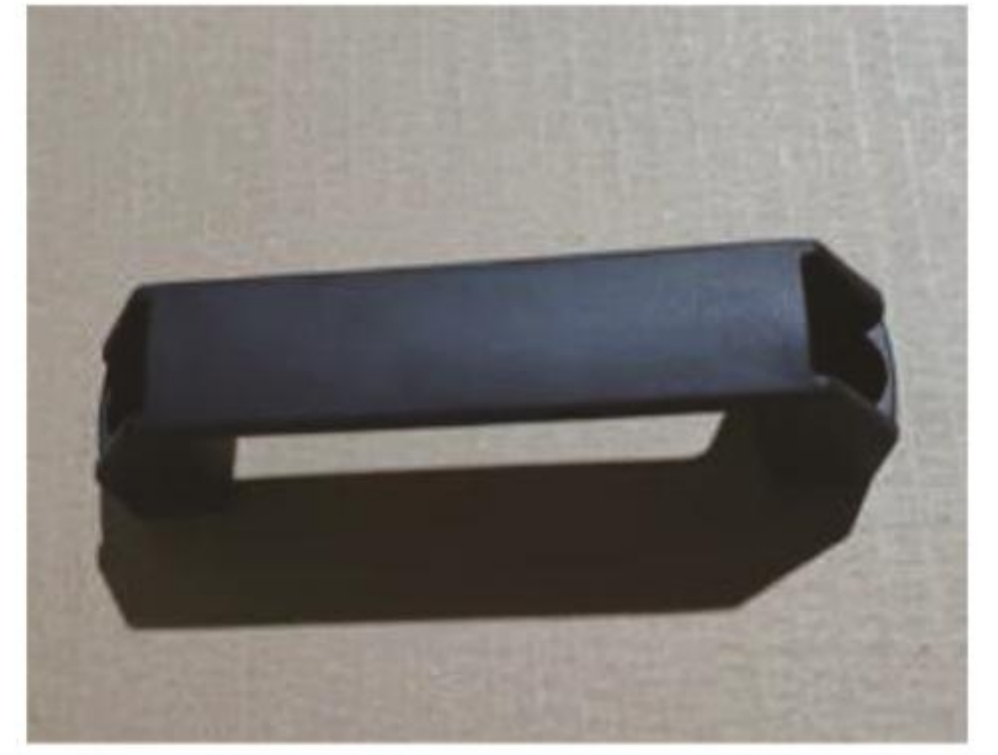
A - Carrello X1



B - Pannello forato X1



C - Supporto per pannello X2



D - Maniglia X1



E - Ruota X4



F - Viti X16



G - Viti X9



H - Viti X2

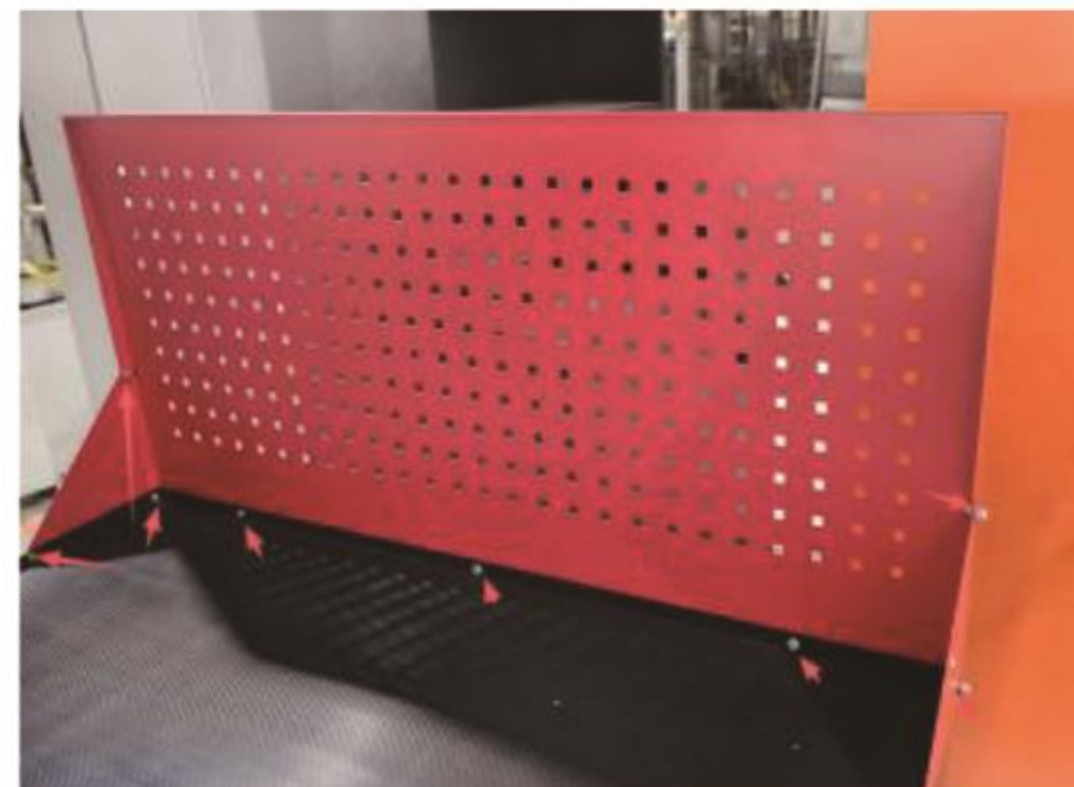


I - Chiave a brugola X1

MONTAGGIO



Step 1: Avvita le 4 ruote E al carrello A, usando per ciascuna ruota 4 viti F (M8-20)



Step 2: Assembla il pannello forato B, usando 2 supporti C e 9 viti G (M8-10)



Step 3: Montare la maniglia D usando 2 viti H (M8-15)



Finito

